

Parts Catalog

MODEL

FC540V-X

PRODUCT CODE

FC540V-AS00, BS00

*klep speling FC 540 inlaat 0,15
uitlaat 0,15*

JOHN DEERE

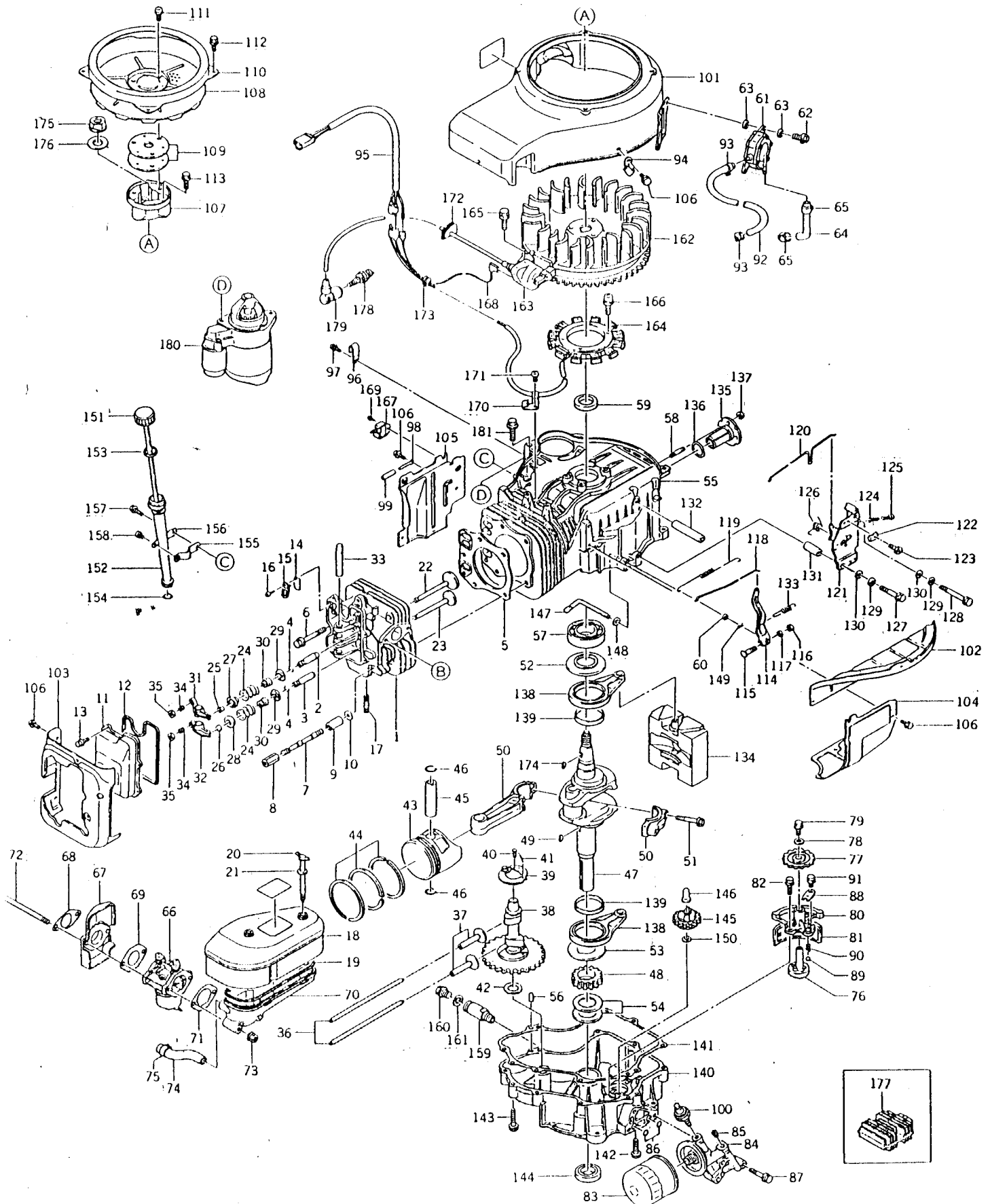


© KAWASAKI HEAVY INDUSTRIES, LTD.

ENGINE DIVISION

870728 Printed in Japan

FC540V-X FC540V-AS00,BS00



FC540V-X FC540V-AS00,BS00 (A,B)

Ref.No.	Part No.	Part Name	Quantity				Remarks
			A	B			
1	11008-6001	CYLINDER HEAD COMP	1	1			
2	49002-2073	.GUIDE, valve (IN)	1	1			
3	49002-2074	.GUIDE, valve (EX)	1	1			
4	92036-023	.RING, snap	2	2			
5	11004-2087	GASKET, head	1	1			
6	92002-2273	BOLT, head	3	3			
7	92004-2089	STUD	2	2			
8	92015-2141	NUT, head	2	2			
9	92027-2090	COLLAR	2	2			
10	92022-2206	WASHER	2	2			
11	11022-2055	CASE, rocker	1	1			
12	11009-2433	GASKET, rocker case	1	1			
13	130B0614	BOLT (6x14)	4	4			
14	16126-2113	VALVE	1	1			
15	13169-2436	PLATE	1	1			
16	315801-6732A	SCREW	1	1			
17	171G0818	STUD	2	2			
18	11010-2250	AIR FILTER ASSY	1	1			Fig. A-1
19	11009-2434	GASKET, air filter	1	1			
20	92002-2274	BOLT	2	2			
21	92022-2220	WASHER	2	2			
22	12004-2080	VALVE, intake	1	1			
23	12005-2069	VALVE, exhaust	1	1			
24	49078-2061	SPRING, valve	2	2			
25	352101-2115A	COLLET, valve	1	1			
26	11012-2189	CAP, valve	1	1			
27	352101-2116A	RETAINER, spring	1	1			
28	12009-2058	RETAINER, spring	1	1			
29	16007-2052	SEAT, spring	2	2			
30	92049-2100	SEAL, oil	2	2			
31	12016-2055	ARM, rocker	1	1			
32	12016-2054	ARM, rocker	1	1			
33	12020-2058	SHAFT, rocker	1	1			
34	92009-2182	SCREW	2	2			
35	92015-2139	NUT	2	2			
36	13116-2055	ROD, push	2	2			
37	12032-2061	TAPPET	2	2			
38	49118-2055	CAM SHAFT COMP	1				
	49118-2062	CAM SHAFT COMP		1			
39	21118-2055	.DECOMPRESSOR	1	1			
40	92043-2113	.PIN	2	2			
41	316670-1243-00	.SPRING	1	1			

FC540V-X FC540V-AS00,BS00 (A, B)

Ref.No.	Part No.	Part Name	Quantity					Remarks
			A	B				
42	92025-2177	SHIM	AR					t=1.54
	92025-2192	SHIM	AR					t=1.575
	92025-2178	SHIM	AR					t=1.61
	92025-2193	SHIM	AR					t=1.645
	92025-2179	SHIM	AR					t=1.68
	92025-2194	SHIM	AR					t=1.715
	92025-2180	SHIM	AR					t=1.75
	92025-2195	SHIM	AR					t=1.785
	92025-2181	SHIM	AR					t=1.82
	92025-2196	SHIM	AR					t=1.855
	92025-2182	SHIM	AR					t=1.89
43	13001-2092	PISTON	1	1				S.T.D
	13029-2078	PISTON	AR	AR				O/S 0.25mm
	13029-2079	PISTON	AR	AR				O/S 0.50mm
	13027-2054	PISTON	AR	AR				O/S 0.75mm
44	13008-6001	PISTON RING SET	1	1				S.T.D
	13008-6002	PISTON RING SET	AR	AR				O/S 0.25mm
	13008-6003	PISTON RING SET	AR	AR				O/S 0.50mm
	13008-6004	PISTON RING SET	AR	AR				O/S 0.75mm
45	13002-2070	PIN, piston	1	1				
46	92033-2080	RING, snap	2	2				
47	49119-2112	CRANK SHAFT ASSY	1	1				
48	59056-2089	GEAR, helical	1					
	59056-2106	GEAR, helical		1				
49	510A5100	KEY	1	1				
50	13251-6010	CONNECTING ROD ASSY	1	1				S.T.D
	13251-6014	CONNECTING ROD ASSY	AR	AR				U/S 0.50mm
51	315801-3245A	BOLT, connecting rod	2	2				
52	92026-2160	SPACER	1	1				
53	92026-2161	SPACER	1	1				
54	92025-2183	SHIM	AR	AR				t=1.18
	92025-2197	SHIM	AR	AR				t=1.215
	92025-2184	SHIM	AR	AR				t=1.25
	92025-2198	SHIM	AR	AR				t=1.285
	92025-2185	SHIM	AR	AR				t=1.32
	92025-2199	SHIM	AR	AR				t=1.355
	92025-2186	SHIM	AR	AR				t=1.39
	92025-2200	SHIM	AR	AR				t=1.425
	92025-2187	SHIM	AR	AR				t=1.46
	92025-2201	SHIM	AR	AR				t=1.495
	92025-2188	SHIM	AR	AR				t=1.53
92025-2202	SHIM	AR	AR				t=1.565	

FC540V-X FC540V-AS00,BS00 (A,B)

Ref.No.	Part No.	Part Name	Quantity				Remarks
			A	B			
54	92025-2189	SHIM	AR	AR			t=1.60
	92025-2203	SHIM	AR	AR			t=1.635
	92025-2190	SHIM	AR	AR			t=1.67
	92025-2204	SHIM	AR	AR			t=1.705
	92025-2191	SHIM	AR	AR			t=1.74
55	49120-6007	CRANK CASE COMP	1	1			
56	92043-2111	PIN	2				
	92043-1263	PIN		2			
57	601A6307	BEARING, ball (6307)	1	1			
58	92004-2083	STUD	4	4			
59	92049-2096	SEAL, oil	1	1			
60	92049-2097	SEAL, oil	1	1			
61	49040-2058	FUEL PUMP ASSY	1	1			Fig. P-1
62	130B0614	BOLT (6x14)	2	2			
63	92022-553	WASHER	4	4			
64	92059-2174	TUBE	1	1			
65	317196-6812-00	CLIP	2	2			
66	15001-2410	CARBURETOR ASSY	1				Fig. C-1
	15001-2730	CARBURETOR ASSY		1			Fig. C-1
67	16073-2097	INSULATOR	1	1			
68	11009-2435	GASKET	1	1			
69	11009-2436	GASKET	1	1			
70	16060-2116	PIPE, intake	1	1			
71	11009-2437	GASKET	1	1			
72	92004-2090	STUD	2	2			
73	92015-1143	NUT	2	2			
74	92059-2175	TUBE, breather	1	1			
75	316666-6812B	CLIP	1	1			
76	16082-2058	OIL PUMP ASSY	1	1			
77	59056-2090	GEAR, helical	1	1			
78	314501-6681A	WASHER	1	1			
79	130B0610	BOLT (6x10)	1	1			
80	16142-6002	PUMP COVER COMP	1	1			
81	49065-2058	FILTER, oil	1	1			
82	130B0825	BOLT (8x25)	2	2			
83	49065-2058	FILTER, oil	1	1			
84	31064-6001	PIPE COMP	1	1			
85	352101-4145A	PLUG	1	1			
86	92055-2073	O-RING	2	2			
87	130B0840	BOLT (8x40)	3	3			
88	13169-2360	PLATE	1	1			
89	600A1000	BALL, steel	1	1			

FC540V-X FC540V-AS00, BS00 (A, B)

Ref.No.	Part No.	Part Name	Quantity				Remarks
			A	B			
90	92081-2305	SPRING	1	1			
91	130B0610	BOLT (6x10)	1	1			
92	705A061000	TUBE, braid	1	1			ℓ=315mm
93	317196-6812-00	CLIP	2	2			
94	92037-2176	CLAMP	1	1			
95	26001-2150	HARNESS	1	1			
96	317472-6814A	CLAMP	1				
97	130B0610	BOLT (6x10)	1				
98	313646-8161-00	CLAMP	1	1			
99	313642-8167-00	TUBE	1	1			
100	317471-8620A	SWITCH, oil pressure	1	1			
101	59066-2285-9H	HOUSING, fan	1	1			
102	59066-2286-9H	HOUSING, fan	1	1			
103	49089-2194-9H	SHROUD	1	1			
104	49089-2195-9H	SHROUD	1	1			
105	49089-2196-9H	SHROUD	1	1			
106	130G0612	BOLT (6x12)	13	13			
107	11044-2084	BRACKET	1	1			
108	14037-2091-9H	SCREEN	1	1			
109	92025-2003	SHIM	AR	AR			t=1.2
110	55020-2057	GUARD	1	1			
111	224B0616	SCREW (6x16)	3	3			
112	130B0508	BOLT (5x8)	4	4			
113	130B0820	BOLT (8x20)	3	3			
114	21187-2053	ARM ASSY	1	1			
115	92002-2269	BOLT	1	1			
116	311B0600	NUT (6mm)	1	1			
117	411B0600	WASHER	1	1			
118	16171-2052	LINK, governor	1	1			
119	92081-2306	SPRING, link	1	1			
120	16169-2078	LINK, choke	1	1			
121	49113-2057	CONTROL PANEL COMP	1	1			
122	92037-2020	•CLAMP	1	1			
123	310701-1225A	•BOLT	1	1			
124	314401-5321B	•SPRING	1	1			
125	214B0425	•SCREW (4x25)	1	1			
126	92081-2316	•SPRING	1	1			
127	112G0650	BOLT (6x50)	1	1			
128	112G0690	BOLT (6x90)	1	1			
129	461F0600A	WASHER, spring	2	2			
130	311509-3595-00	WASHER	2	2			
131	92027-2071	COLLAR	1	1			

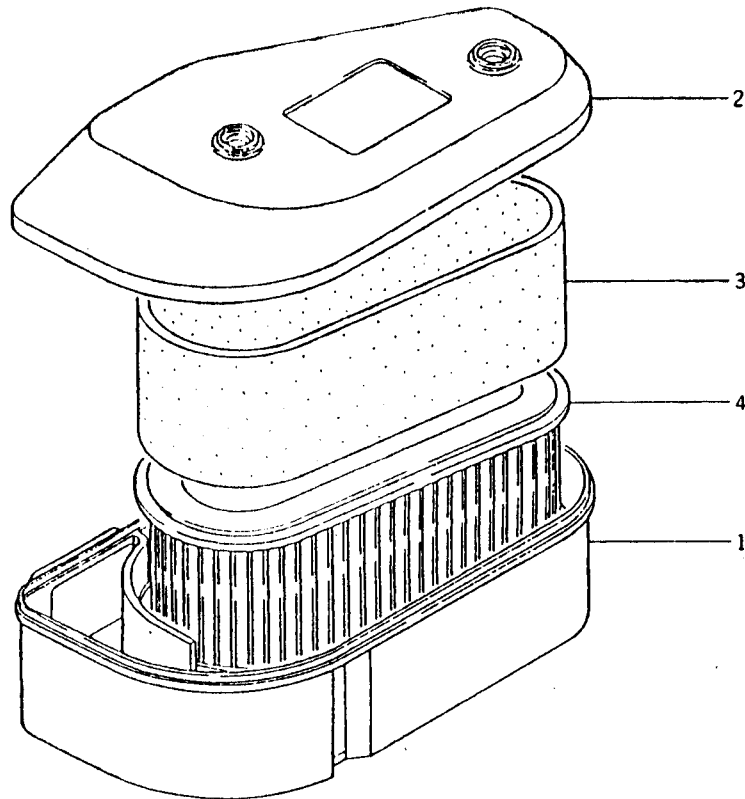
FC540V-X FC540V-AS00,BS00 (A,B)

Ref.No.	Part No.	Part Name	Quantity				Remarks
			A	B			
132	92027-2091	COLLAR	1	1			
133	92081-2307	SPRING	1	1			
134	13042-6007	WEIGHT COMP	1	1			
135	13107-2091	SHAFT	1	1			
136	92055-2072	O-RING	1	1			
137	92015-1193	NUT	4	4			
138	46102-6002	ROD ASSY	2	2			
139	92141-2092	.BEARING, plain	2	2			
140	49015-6007	CRANK CASE COVER COMP	1				
	49015-6029	CRANK CASE COVER COMP		1			
141	11009-2438	GASKET	1	1			
142	130T0830	BOLT (8x30)	1	1			
143	130T0845	BOLT (8x45)	8	8			
144	92049-2104	SEAL, oil	1	1			
145	49110-2067	GOVERNOR ASSY	1	1			
146	42036-2060	SLEEVE, governor	1	1			
147	39003-2063	ARM, pivot	1	1			
148	410B0600	WASHER	1	1			
149	554A0600	PIN, snap	1	1			
150	92072-2135	WASHER	1	1			
151	52005-2065	GAUGE, oil	1	1			
152	59231-2062	FILLER	1	1			
153	11009-2346	GASKET	1	1			
154	670D2016	O-RING	1	1			
155	92037-2181	CLAMP	1	1			
156	92037-2182	CLAMP	1	1			
157	130B0614	BOLT (6x14)	1	1			
158	220B0608	SCREW (6x8)	1	1			
159	59071-2070	JOINT	1	1			
160	92066-2092	PLUG, drain	1	1			
161	317370-7883-00	GASKET	1	1			
162	21193-2057	FLYWHEEL ASSY	1	1			
163	21121-2059	COIL, ignition	1	1			
164	59031-2063	COIL, charging	1	1			
165	130B0525	BOLT (5x25)	2	2			
166	225B0625	SCREW (6x25)	4	4			
167	21119-2095	IGNITER	1	1			
168	26011-2104	WIRE, lead	1	1			
169	224B0408	SCREW (4x8)	1	1			
170	92037-2177	CLAMP	1	1			
171	315801-6732A	SCREW	1	1			
172	92071-2112	GROMMET	1	1			

FC540V-X FC540V-AS00,BS00 (A,B)

Ref.No.	Part No.	Part Name	Quantity				Remarks
			A	B			
173	92071-2099	GROMMET	1	1			
174	510A5100	KEY	1	1			
175	92015-2152	NUT	1	1			
176	92022-2207	WASHER	1	1			
177	21066-2056	REGULATOR, voltage	1	1			
178	92070-2075	PLUG, spark	1	1			
179	21130-2060	CAP, plug	1	1			
180	21163-2069	ELECTRIC STARTER ASSY	1	1			Fig. S-1
181	130B0835	BOLT (8x35)	2	2			

Fig. A-1 AIR FILTER



Ref.No.	Part No.	Part Name	Quantity					Remarks
			A	B				
	11010-2250	AIR FILTER ASSY	1	1				
A-1- 1	11011-2155	•CASE, air filter	1	1				
A-1- 2	11012-2187	•CAP, air filter	1	1				
A-1- 3	11013-2097	•ELEMENT, air filter	1	1				
A-1- 4	11013-2098	•ELEMENT, air filter	1	1				

Fig. C-1 CARBURETOR

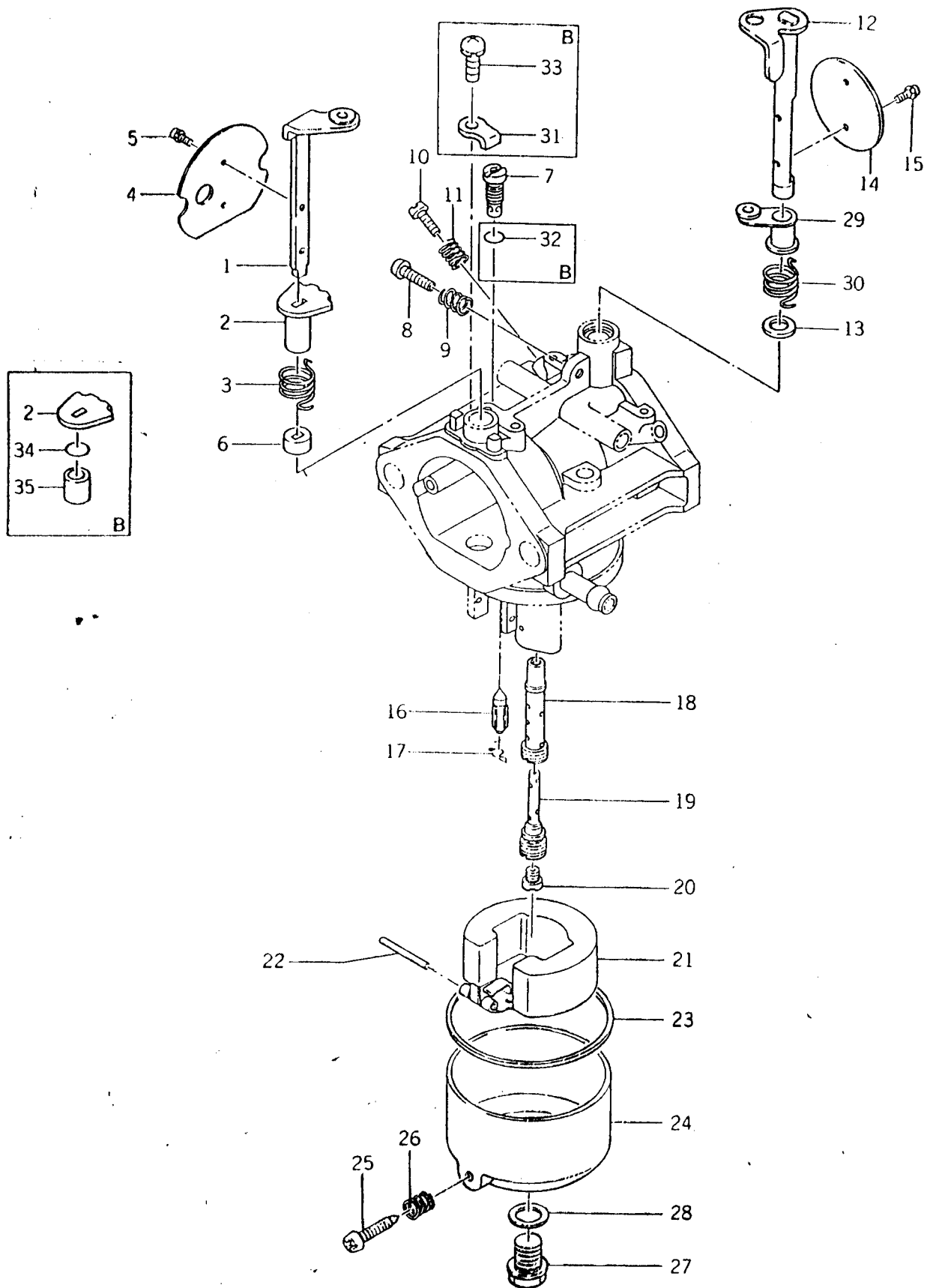


Fig. C-1 CARBURETOR

Ref.No.	Part No.	Part Name	Quantity				Remarks
			A	B			
	15001-2410	CARBURETOR ASSY	1				
	15001-2730	CARBURETOR ASSY		1			
C-1- 1	16041-2131	• SHAFT, choke	1	1			
C-1- 2	92027-2087	• COLLAR	1				
	92143-2133	• COLLAR		1			
C-1- 3	92081-2303	• SPRING	1	1			
C-1- 4	16126-2109	• VALVE, choke	1	1			
C-1- 5	314572-6137A	• SCREW	2	2			
C-1- 6	314598-6138A	• COLLAR	1				
	92143-2132	• COLLAR		1			
C-1- 7	92064-2054	• JET, pilot (#72.5)	1				
	92064-2057	• JET, pilot (#82.5)		1			
C-1- 8	214B0414	• SCREW (4x14)	1	1			
C-1- 9	312750-6116-00	• SPRING	1	1			
C-1-10	16014-2056	• SCREW, pilot air	1	1			
C-1-11	92144-2010	• SPRING	1	1			
C-1-12	16041-2132	• SHAFT, throttle	1	1			
C-1-13	316626-6206A	• SEAL	1	1			
C-1-14	16025-2091	• VALVE, throttle (#160)	1				
	16025-2125	• VALVE, throttle (#130)		1			
C-1-15	316550-6137A	• SCREW	2	2			
C-1-16	16030-2067	• VALVE, needle	1	1			
C-1-17	314595-6134A	• CLIP	1				
	315721-6134A	• CLIP		1			
C-1-18	49121-2076	• NOZZLE, main (#1A)	1	1			
C-1-19	49123-2054	• HOLDER, main jet	1				
	49123-2057	• HOLDER, main jet		1			
C-1-20	92063-141	• JET, main (#115)	1	1			
C-1-21	315801-6126A	• FLOAT	1				
	16031-2066	• FLOAT		1			
C-1-22	314499-6127A	• PIN, float	1	1			
C-1-23	313650-6128-00	• GASKET	1	1			
C-1-24	315823-6130A	• FLOAT CHAMBER ASSY	1				
	16020-2094	• FLOAT CHAMBER ASSY		1			
C-1-25	315470-6133A	• SCREW, drain	1	1			
C-1-26	313122-6116-00	• SRPING	1	1			
C-1-27	314486-6143A	• BOLT	1	1			
C-1-28	318190-6159-00	• WASHER	1	1			
C-1-29	92027-2025	• COLLAR	1	1			
C-1-30	92081-2341	• SPRING	1	1			
C-1-31	13183-2112	• PLATE		1			
C-1-32	16038-024	• GASKET		1			
C-1-33	92009-2244	• SCREW		1			
C-1-34	92093-2081	• SEAL		1			
C-1-35	92143-2134	• RING		1			

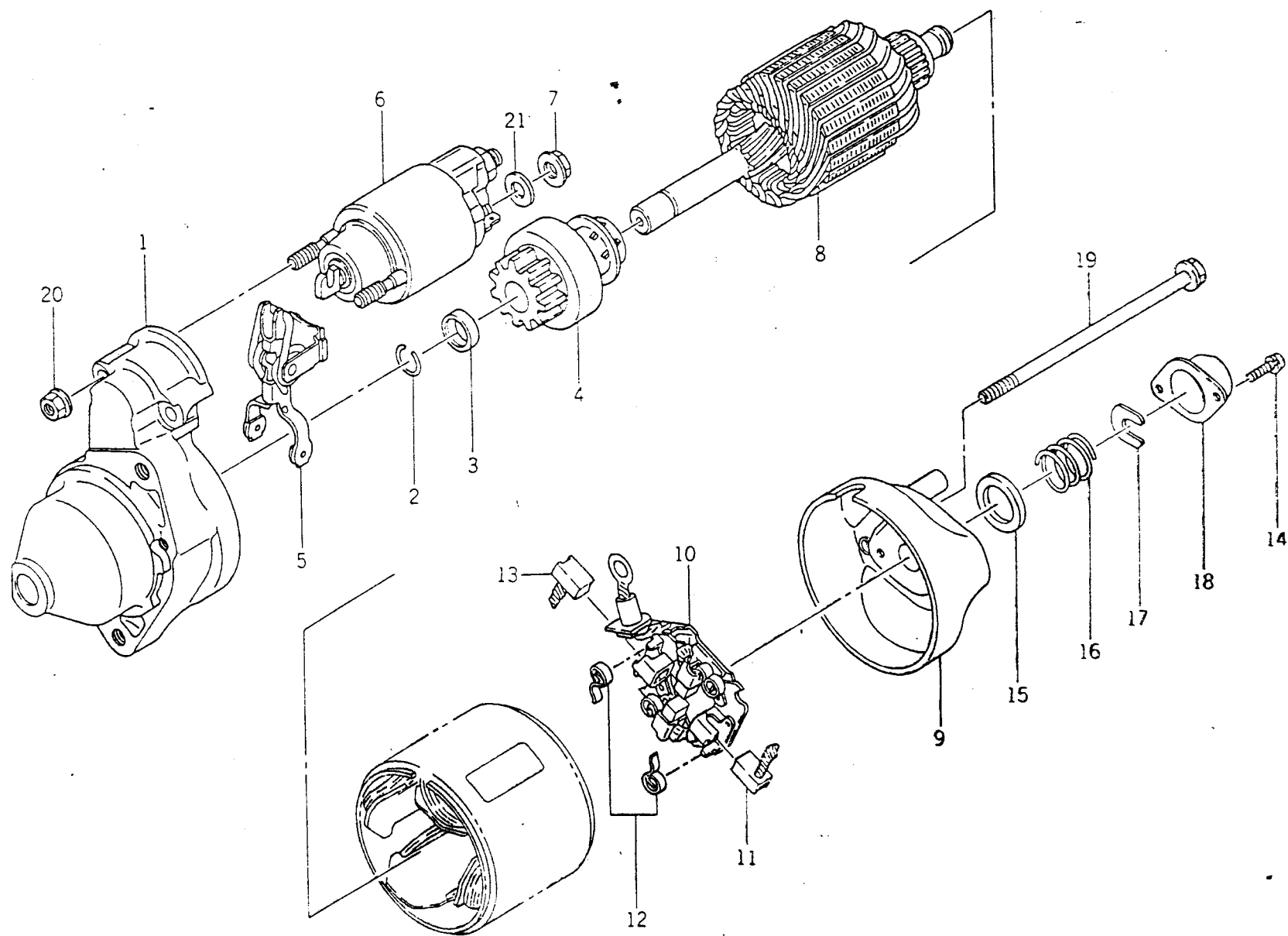
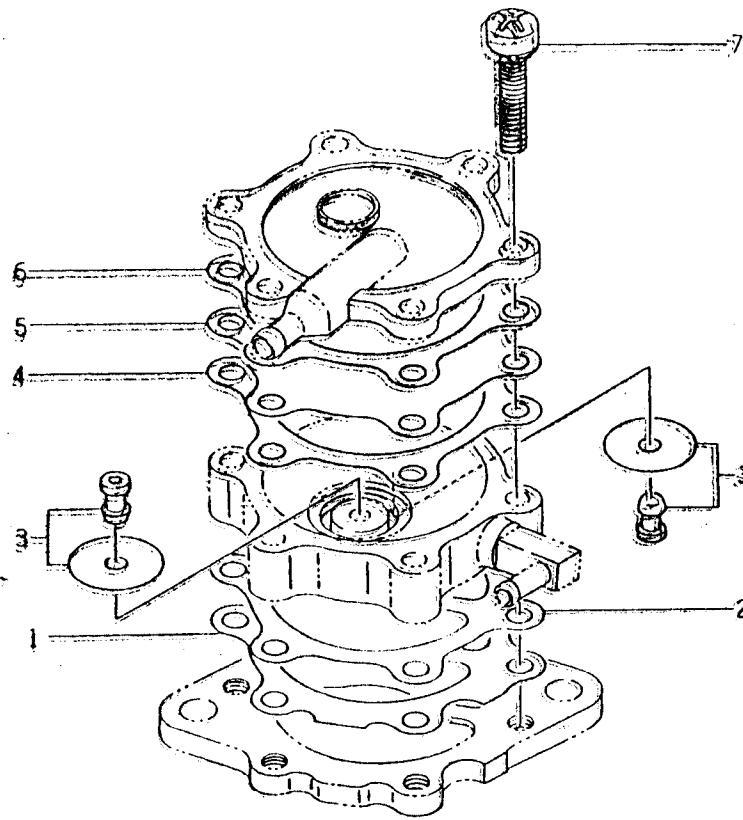


FIG. S-1 ELECTRIC STARTER

Fig. S-1 ELECTRIC STARTER

Ref.No.	Part No.	Part Name	Quantity				Remarks
			A	B			
	21163-2069	ELECTRIC STARTER ASSY	1	1			
S-1- 1	16146-2074	•COVER ASSY	1	1			
S-1- 2	92033-2079	•RING, snap	1	1			
S-1- 3	32085-2063	•STOPPER, pinion	1	1			
S-1- 4	13081-2083	•CLUTCH ASSY	1	1			
S-1- 5	13168-2126	•LEVER, shift	1	1			
S-1- 6	27010-2119	•SWITCH ASSY	1	1			
S-1- 7	92015-2147	•NUT	1	1			
S-1- 8	21080-2053	•ARMATURE	1	1			
S-1- 9	16146-2075	•COVER ASSY	1	1			
S-1-10	14079-2057	•BRUSH HOLDER ASSY	1	1			
S-1-11	21039-2058	••BRUSH	2	2			
S-1-12	21040-2053	••SPRING, brush	4	4			
S-1-13	21039-2058	•BRUSH	2	2			
S-1-14	92009-2190	•SCREW	2	2			
S-1-15	92093-2066	•SEAL, starter	1	1			
S-1-16	92081-2312	•SPRING	1	1			
S-1-17	32085-2064	•STOPPER	1	1			
S-1-18	14024-2025	•COVER	1	1			
S-1-19	92002-2275	•BOLT	2	2			
S-1-20	92015-2146	•NUT	2	2			
S-1-21	92022-2211	•WASHER	1	1			

Fig. P-1 FUEL PUMP



Ref. No.	Part No.	Part Name	Quantity				Remarks
			A	B			
	49040-2058	FUEL PUMP ASSY	1	1			
P-1- 1	11009-2353	• GASKET	1	1			
P-1- 2	43028-2052	• DIAPHRAGM	1	1			
P-1- 3	49116-2051	• VALVE ASSY	2	2			
P-1- 4	11009-2352	• GASKET	1	1			
P-1- 5	43028-2051	• DIAPHRAGM	1	1			
P-1- 6	11009-2351	• GASKET	1	1			
P-1- 7	92009-2212	• SCREW	6	6			